

HAVTECH / SUPPLY



AIR DISTRIBUTION **STOCK CATALOG**

Baltimore | Washington DC

HAVTECH SUPPLY LOCATIONS

When you need air distribution equipment, you need a company you can rely on to provide quality products at an affordable price, and you need it to be all in one place. The Havtech Air Distribution Team offers the expertise to help whether you are installing, maintaining or upgrading any HVAC system.

Our fully stocked Havtech Supply stores will allow you to get to the jobsite or customer fast. Whether you need a new piece of equipment, an OEM part or general parts and supplies, we can get you on the road with only one stop.

We offer same day pick-up or next day delivery for orders placed **before 2 PM**. For your convenience, we also offer same day delivery for orders placed within our same day delivery zone. Please call for details.

TWO LOCATIONS TO SERVE YOU

COLUMBIA RETAIL STORE

9505 Berger Road
Columbia, MD 21046
(240) 568-0960

CAPITOL HEIGHTS RETAIL STORE

1101 Hampton Park Blvd, Ste 400
Capitol Heights, MD 20743
(240) 547-0287

BUSINESS HOURS

MONDAY - THURSDAY
6:30 AM - 4:30 PM

FRIDAY
6:30 AM - 4 PM

FOR QUOTES & ORDERS

EMAIL
Parts@Havtech.com

YOU DEMAND THE BEST TECHS – SO DO WE.

Our highly sought-after team of technicians has industry-leading expertise across a wide range of equipment. We service your entire system, helping you resolve complicated technical issues and operate at maximum efficiency. With Havtech, you get one team of experts to source, install, start-up and conduct preventive or scheduled maintenance of your equipment.



LEARN MORE ABOUT
OUR SERVICES

RGD Product Cross Reference 4

Registers, Grilles & Diffusers

Supply Diffusers 5

Slot Diffusers 7

Supply Registers 8

Return Grilles 9

Perforated & Egg Crate Returns 11

Accessories 13

Single Duct VAV Boxes 14

Fire Dampers, Louvers, & Accessories

Fire Dampers 15

Louvers 16

Duct Doors 17

Flex Duct & Accessories

Flex Duct, Nylon Duct Bands & Quick Release Stainless Steel Bands 18

Roof Products & Accessories

Equipment Rails, Roof Curbs 19

Roof Pipe Portals 20

Snaplock Pipe & Fittings

Snaplock Pipe & Fittings 21

Cable Operated Dampers & Accessories

Cable Operated Dampers & Accessories 23

Exhaust Fans

Ventilation Fans..... 24

Airflow Regulators

Constant Airflow Regulators 25

The Fine Print

Terms & Conditions of Sale..... 26

RGD PRODUCT CROSS REFERENCE

4

Price Industries	Metal*Aire	Nailor Industries	Titus	Krueger	Tuttle & Bailey
SMD	5500S	6500	TDC	SH	M
SCD	5700/5800	RNS	TMS	1400	S1200
SPD	5750/5850	UNI	OMNI	PLQ	S1100
RCDE	3100	RNR	TMR	RM1	P3
PDF	7500/7550	4320/4325	PAS	6604	PP
PDC	7600	4320CB/4325CB	PCS	6504	PV
PDDR	7500R	4360/4365	PAR/PMR/PDR	6490/6690	PP
PFRF	SPRTB	4302	PXP/PXP-DF	6790	PTL
APF	PFTB	DFA	TRM	5HCF	SMF
520D	V4004SD	61DV/61DH	300R	880	T64
530	SRH	6145	350R	S80	T70
80	CC5	51EC	50	EGC5	CRE500
530FF	SRHF	61FB45	350RLF1	S80H	T70DFB
TBDI	PHPSI	57101	TBDI	PSTBSI	SVPS
SDS100	6600	5010	ML-39	1910	6000
SDV5	TH	3001	ESV	LMHS	SDV
RAC	--	--	ACPT	--	--

The information contained within this cross reference should be used as a "guide" when making product selections. Havtech Supply, LLC will not be held responsible for any errors caused by its use.

SPD

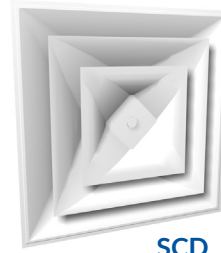
Square Plaque Diffuser



SPD

SCD

Square 3-Cone Diffuser



SCD

Inlet Size	Panel Size	CFM	SPD31 Steel, T-Bar	SPD17 Steel, Finline	SCD31 Steel, T-Bar	SCD17 Steel, Finline	SCDA3 Adj. Steel, T-Bar	SCDA17 Adj. Steel, Finline	VCR8E Damper
6	12 × 12	157	●	--	●	--	--	--	●
	24 × 24		●	●	●	●	●	●	●
8	12 × 12	279	●	--	●	--	--	--	●
	24 × 24		●	●	●	●	●	●	●
10	24 × 24	436	●	●	●	●	●	●	●
12	24 × 24	628	●	●	●	●	●	●	●
14	24 × 24	855	●	●	●	●	●	●	●
15	24 × 24	982	●	●	●	--	--	--	--

CFM @ 800FPM Neck Velocity.
 Border 3/31 is for a 15/16" flat ceiling grid.
 Border 17 is for a 9/16" fineline ceiling grid.
 ● In Stock

SMD

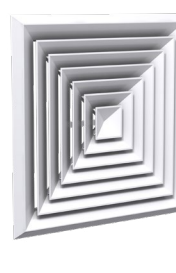
Steel, Louvered Face Directional Diffuser



SMD36



SMD3P



SMD6



VCS3

4A	3A	2G	2S	1S	Panel Size	CFM	T-Bar	Surface Mount	Damper Lever Operated
							SMD3P	SMD6	VCS3
◆	◆	◆	◆	◆	24 × 24	125	6 × 6	6 × 6	6 × 6
◆	◆	◆	◆	◆	24 × 24	282	9 × 9	9 × 9	9 × 9
◆	◆	◆	◆	◆	24 × 24	500	12 × 12	12 × 12	12 × 12
◆	◆	◆	◆	◆	24 × 24	781	15 × 15	15 × 15	15 × 15
◆	◆	◆	◆	◆	24 × 24	1125	18 × 18	18 × 18	18 × 18

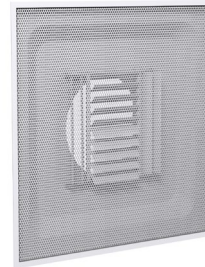
CFM @ 500FPM Neck Velocity.
 *18 x 18 is only available with Frame 36.
 *Square to round sizes and item #'s can be found on page 22.

PDF/PDC

Steel, Perforated Supply Diffuser



PDF



PDC

Size	Panel Size	CFM	PDF3 Face-Mounted Pattern Controller	PDF17 Face-Mounted Pattern Controller	PDC3 Curved Blade, Neck-Mounted Pattern Controller	PDC17 Curved Blade, Neck-Mounted Pattern Controller	VCR8E Damper
6	12 × 12	98	●	--	--	--	●
	24 × 24	98	●	●	●	●	●
8	24 × 24	175	●	●	●	●	●
10	24 × 24	273	●	●	●	●	●
12	24 × 24	393	●	●	●	●	●
14	24 × 24	535	●	●	●	●	●
16	24 × 24	535	●	●	--	--	--

CFM @ 500FPM Neck Velocity
 Model PDC3 stocked in 4-Way air pattern only.
 Border 3 is for a 15/16" flat ceiling grid.
 Border 17 is for 9/16" fineline ceiling grid.
 ● In Stock

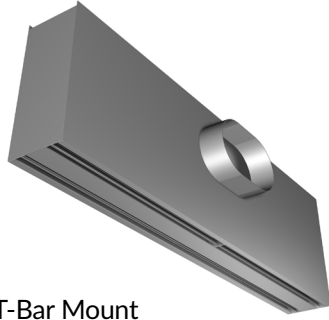
RCDE

Steel, Round Diffuser

Size	CFM	RCDE	VCR8E Damper
6	160	●	●
8	280	●	●
10	435	●	●
12	630	●	●

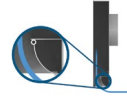


CFM @ 800FPM Neck Velocity.
 ● In Stock

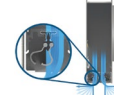


TBDI2/3/4

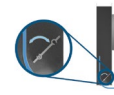
Insulated Slot Diffuser with T-Bar Mount



Curved
TBDI2 Series



Ice-Tong
TBDI3 Series



Blade
TBDI4 Series

Slot Width	# of Slots	Dimensional Data				TBDI2 Standard & Frame 17	TBDI3 Standard & Frame 17	TBDI4 Standard & Frame 17	APF Plaster Frame
		Length	Height	Width	Inlet (Oval)				
1"	2	24	8	4	6, 8	--	--	● (Standard only)	●
		48	8	4	6, 8, 10	●	●	●	●
			11		12				
1.5"	2	48	11	5	12	--	--	● (Standard only)	●

Plaster Frame Model APF is to be used for installation of slot diffuser Model TBDI in sheet rock or plaster ceilings.
See Accessories on page 13.
See www.Price-Hvac.com for performance data.
● In Stock

SDS100

Linear Slot Diffuser with 1" Slot Spacing

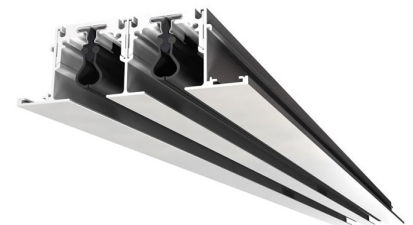


Length	# of Slots	Surface Mount				
		SDS100-2 Flange Frame Concealed Mounting	SDS100-EC-W Flanged End Cap	SDS100-EC-Z Flush Z Style end Cap	SDS100-UPL 48" Insulated Plenum	SDS-ASP Alignment Splice Plate
48	2	●	●	●	●	●
60	2	●	●	●	●	●
72	2	●	●	●	●	●

Finish is B12 White on Frame, Black Pattern Controllers
See www.Price-Hvac.com for performance data.
Field cut oval starter collar inlets for UPL Plenums on page 22.
● In Stock

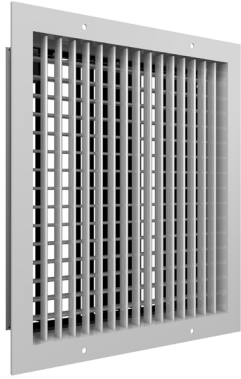
SDS75

Linear Slot Diffuser with 3/4" Slot Spacing



Length	# of Slots	Surface Mount				
		SDS75-2 Flange Frame Concealed Mounting	SDS75-EC-W Flanged End Cap	SDS75-EC-Z Flush Z Style end Cap	SDS75-UPL 48" Insulated Plenum	SDS-ASP Alignment Splice Plate
48	2	●	●	●	●	●
60	2	●	●	●	●	●
72	2	●	●	●	●	●

Finish is B12 White on Frame, Black Pattern Controllers
See www.Price-Hvac.com for performance data.
Field cut oval starter collar inlets for UPL Plenums on page 22.
● In Stock



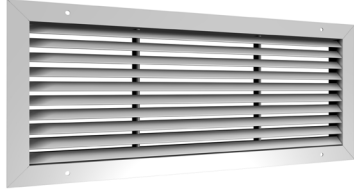
520D

Steel, Double Deflection Supply Register with Damper

Size	CFM	520D
6 x 4	75	●
6 x 6	90	●
8 x 4	90	●
8 x 6	130	●
8 x 8	195	●
10 x 4	110	●
10 x 6	170	●
10 x 8	230	●
10 x 10	300	●
12 x 4	130	●
12 x 6	195	●
12 x 8	300	●
12 x 10	345	●
12 x 12	450	●
14 x 4	150	●
14 x 6	230	●
14 x 8	345	●
14 x 10	405	●
14 x 12	535	●
14 x 14	590	●
16 x 4	170	●
16 x 6	260	●
16 x 8	405	●
16 x 10	450	●
16 x 12	590	●
16 x 14	670	●

Size	CFM	520D
16 x 16	800	●
18 x 6	450	●
18 x 8	450	●
18 x 10	535	●
18 x 12	670	●
20 x 6	345	●
20 x 8	500	●
20 x 10	590	●
20 x 12	725	●
20 x 14	900	●
24 x 6	400	●
24 x 8	590	●
24 x 10	700	●
24 x 12	900	●
24 x 16	1220	●
30 x 6	535	●
30 x 8	725	●
30 x 10	975	●
30 x 12	1150	●
30 x 16	1560	●
36 x 6	775	●
36 x 8	900	●
36 x 10	1180	●
36 x 12	1390	●
36 x 14	1625	●
36 x 16	1800	●

CFM @ 500FPM Neck Velocity.
● In Stock



530

Steel, 45° Single Deflection Return Grille

Size	CFM	530	VCS3 Dampers
6 x 6	90	●	●
8 x 6	130	●	●
8 x 8	195	●	●
10 x 6	170	●	●
10 x 8	230	●	●
10 x 10	300	●	●
12 x 6	195	●	●
12 x 8	300	●	●
12 x 10	345	●	●
12 x 12	455	●	●
14 x 6	230	●	●
14 x 8	345	●	●
14 x 10	405	●	●
14 x 12	535	●	●
14 x 14	590	●	●
16 x 6	260	●	--
16 x 8	405	●	--
16 x 10	455	●	--
16 x 12	590	●	--
16 x 14	670	●	--
16 x 16	800	●	--
18 x 6	300	●	--
18 x 8	455	●	--
18 x 10	535	●	--
18 x 12	670	●	--
18 x 14	800	●	--
18 x 16	900	●	--
18 x 18	1040	●	--
20 x 8	500	●	--
20 x 10	590	●	--



VCS3

Opposed Blade Damper Screwdriver Slot Operator

Size	CFM	530
20 x 12	725	●
20 x 14	900	●
20 x 16	1040	●
20 x 18	1225	●
20 x 20	1300	●
24 x 8	590	●
24 x 10	725	●
24 x 12	900	●
24 x 14	1040	●
24 x 16	1225	●
24 x 18	1393	●
24 x 20	1555	●
24 x 24	1805	●
30 x 8	725	●
30 x 10	900	●
30 x 12	1175	●
30 x 14	1390	●
30 x 16	1560	●
30 x 20	2145	●
30 x 24	2275	●
30 x 30	2790	●
36 x 8	900	●
36 x 10	1225	●
36 x 12	1225	●
36 x 16	1925	●
36 x 20	2325	●
36 x 24	2790	●
36 x 30	3700	●
36 x 36	4500	●
48 x 24	4000	●

*530D (530 with Damper), CFM @ 500FPM Neck Velocity.

*Stock VCS3 sizes from 6x6 to 14x14. All other sizes can be factory ordered.

T-Bar

Size	CFM	Panel Size	530 T-Bar	FR17
20 x 20	1280	24 x 24	--	●
22 x 10	683	24 x 12	●	--
22 x 22	1568	24 x 24	●	--
46 x 22	3525	48 x 24	●	--

● In Stock



530D

Steel, 45° Single Deflection Return Register with Damper

Size	CFM	Panel Size	530D T-Bar
22 x 10	683	24 x 12	●
22 x 22	1568	24 x 24	●
46 x 22	3525	48 x 24	●

● In Stock



530FF

Steel, Lay-In Filter Return Grill

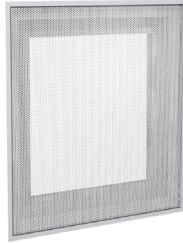
Size	CFM	Panel Size	530FF Steel
20 x 20	1287	24 x 24	●

Filters are not included (Filter Rack is 1")
CFM @ 500FPM Neck Velocity.

● In Stock

PDDR3

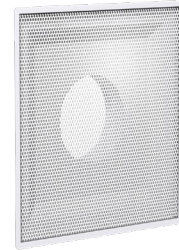
Steel, Perforated Return Diffuser with Round or Square Duct Connection for T-Bar Ceilings



Square Duct Connection

Inlet Size	CFM	Panel Size	PDDR Square T-Bar
10 × 10	347	12 × 12	●
22 × 10	764	24 × 12	●
22 × 22	1681	24 × 24	●
46 × 22	3514	48 × 24	●

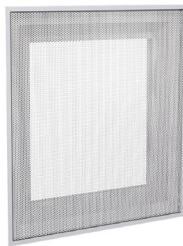
CFM @ 500FPM Neck Velocity.
 Border type 3 is for 15/16" flat ceiling grid.
 ● In Stock



Round Duct Connection

Inlet Size	CFM	Panel Size	PDDR Round T-Bar
6	98	24 × 24	●
8	175	24 × 24	●
10	273	24 × 24	●
12	393	24 × 24	●
14	535	24 × 24	●
16	698	24 × 24	●
18	750	24 × 24	●

CFM @ 500FPM Neck Velocity.
 Border type 3 is for 15/16" flat ceiling grid.
 ● In Stock

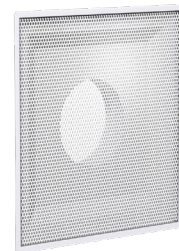


PDDR17

Square Duct Connection

Inlet Size	CFM	Panel Size	PDDR Square T-Bar
22 × 22	1681	24 × 24	●

CFM @ 500FPM Neck Velocity.
 Border type 17 is for 9/16" fineline ceiling grid.
 ● In Stock

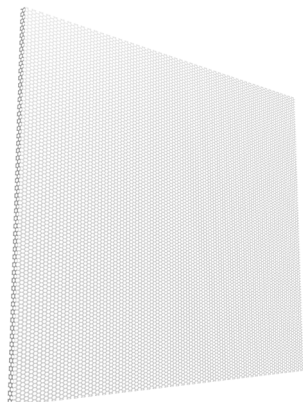


PDDR17

Round Duct Connection

Inlet Size	CFM	Panel Size	PDDR Round T-Bar
6	98	24 × 24	●
8	175	24 × 24	●
10	273	24 × 24	●
12	393	24 × 24	●
14	535	24 × 24	●
16	698	24 × 24	●
18	750	24 × 24	●

CFM @ 500FPM Neck Velocity.
 Border type 17 is for 9/16" fineline ceiling grid.
 ● In Stock



PFRF

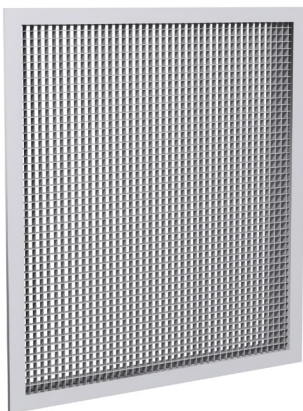
Steel, Perforated Face Return Panel

Size	CFM	PFRF3 T-Bar	PFRF17 T-Bar
24 × 24	1830	●	●

CFM @ 500FPM Neck Velocity
 Border type 3 is for 15/16" flat ceiling grid and 17 is for 9/16" fineline ceiling grid.
 ● In Stock

80

Aluminum Egg Crate Grille with 0° Deflection



T-Bar

Size	CFM	Panel Size	80 No Damper	80D With Damper	80FR17 No Damper
22 × 10	669	24 × 12	●	●	--
20 × 20	1270	24 × 24	--	--	●
22 × 22	1550	24 × 24	●	●	--
46 × 22	3310	48 × 24	●	●	--

CFM @ 500FPM Neck Velocity.
 Border 17 is for 9/16" fineline ceiling grid.
 ● In Stock

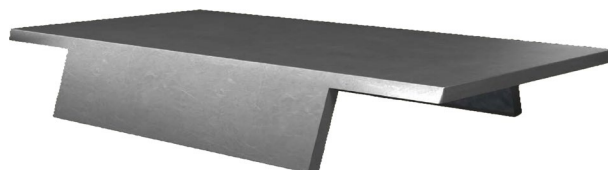
RAC

Return Air Canopy

Prevents the transfer of occupant noise into the plenum above

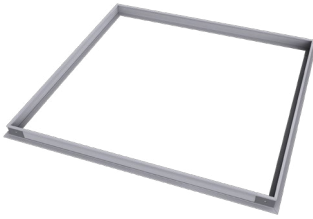
Size	Length	Height	RAC
24 × 24	24	7	●

● In Stock



SPF

Steel Plaster Frame For T-Bar Diffusers
Installed in Sheet Rock Ceilings



Size	SPF
12 x 12	●
24 x 12	●
24 x 24	●

● In Stock

VCS3

Opposed Blade Damper Lever Operator or
Opposed Blade Damper Screwdriver Slot Operator



Lever Operator

Size	VCS3
6 x 6	●
9 x 9	●
12 x 12	●
15 x 15	●
18 x 18	●

● In Stock



Screwdriver Slot Operator

Size	VCS#
6 x 6	●
8 x 6	●
8 x 8	●
10 x 6	●
10 x 8	●
10 x 10	●
12 x 6	●
12 x 8	●
12 x 10	●
12 x 12	●
14 x 6	●
14 x 8	●
14 x 10	●
14 x 12	●
14 x 14	●

● In Stock

APF

Aluminum Plaster Frame for plenum slot diffusers

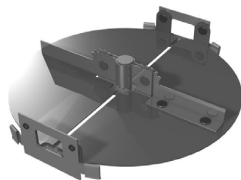
Model	Slot Width	# of Slots	Length	APF Plaster Frame
APF TBDI4100	1"	2	24	●
APF TBDI4100			48	●
APF TBDI4150	1.5"	2	48	●

Plaster Frame Model APF is to be used for installation of slot diffuser Model TBDI 2/3/4 in sheet rock or plaster ceilings.

● In Stock

VCR8E

Inlet Size	VCR8 Damper
6	●
8	●
10	●
12	●
14	●



CFM @ 500FPM Neck Velocity

● In Stock

Touch Up Paint

For use with Price products with a B12 white finish, B15 aluminum finish, or B17 black finish

Item Number	Finish	TUP
TUPB12	B12 White	●
TUPB15	B15 Aluminum	●
TUPB17	B17 Black	●

● In Stock



Single Duct Terminal Units



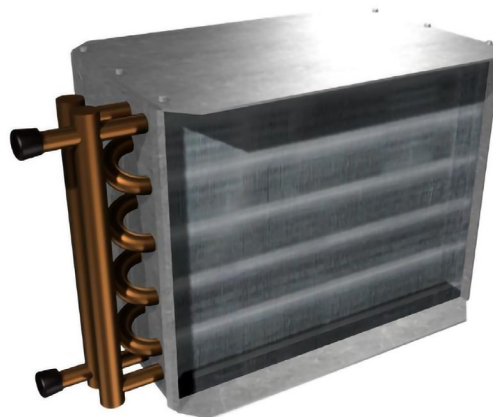
SDV
VAV Single Duct Box

SDV Standard Construction

- + 22 gauge galvanized steel
- + 1/2" fiber free insulation
- + Gasketed damper, mechanically sealed
- + Multipoint crossflow sensor
- + Controls enclosure
- + Slip and drive connection
- + DDC Controls by others

Water Coil

- + 22 gauge zinc-coated steel casing
- + Two row construction
- + Aluminum fins spaced at 10 fins per inch
- + Slip and Drive Connection
- + Accessory for Price Single Duct and Fan Powered Terminal Units or Stand-Alone Duct Heater
- + Rated and Certified to AHRI 410



Inlet Size	CFM Range	Dimensional Data (H × W × L)		Model Description	
		VAV Box	Water Coil	SDV VAV Box	WC Water Coil
6	65 - 550	12x 8 x 20%	12 x 8 x 5	●	●
8	125-1100	12 x 10 x 20%	12 x 10 x 5	●	●
10	210-1800	14 x 12½ x 20%	14 x 12 ½ x 5	●	●
12	300-2600	16 x 15 x 20%	16 x 15 x 5	●	●
14	430-3700	20 x 17½ x 20%	20 x 17½ x 5	●	●
16	575-5000	24 x 18 x 20%	24 x 18 x 5	●	●

● In Stock



VFD-10D-A

Vertical or horizontal, Curtain Style Fire Damper

- For Use In Static or Dynamic HVAC Systems
- U.L. 555 Fire Resistance Rating: 1 ½ Hour
- 165°F UL Listed Fusible Link
- Qualified to 2,000 ft/min and 4 in. wg.

Item Number	Size
VFD-10D-A 6X6	6 x 6
VFD-10D-A 8X6	8 x 6
VFD-10D-A 8X8	8 x 8
VFD-10D-A 10X6	10 x 6
VFD-10D-A 10X8	10 x 8
VFD-10D-A 10X10	10 x 10
VFD-10D-A 12X6	12 x 6
VFD-10D-A 12X8	12 x 8

Item Number	Size
VFD-10D-A 12X10	12 x 10
VFD-10D-A 12X12	12 x 12
VFD-10D-A 14X6	14 x 6
VFD-10D-A 14X8	14 x 8
VFD-10D-A 14X10	14 x 10
VFD-10D-A 14X12	14 x 12
VFD-10D-A 14X14	14 x 14
VFD-10D-A 16X8	16 x 8
VFD-10D-A 16X10	16 x 10
VFD-10D-A 16X12	16 x 12
VFD-10D-A 16X14	16 x 14
VFD-10D-A 16X16	16 x 16
VFD-10D-A 18X10	18 x 10
VFD-10D-A 18X12	18 x 12
VFD-10D-A 18X14	18 x 14
VFD-10D-A 18X16	18 x 16
VFD-10D-A 18X18	18 x 18

Item Number	Size
VFD-10D-A 20X10	20 x 10
VFD-10D-A 20X12	20 x 12
VFD-10D-A 20X14	20 x 14
VFD-10D-A 20X16	20 x 16
VFD-10D-A 20X18	20 x 18
VFD-10D-A 20X20	20 x 20
VFD-10D-A 24X10	24 x 10
VFD-10D-A 24X12	24 x 12
VFD-10D-A 24X14	24 x 14
VFD-10D-A 24X16	24 x 16
VFD-10D-A 24X18	24 x 18
VFD-10D-A 24X20	24 x 20
VFD-10D-A 24X24	24 x 24
VFD-10D-A 36X14	36 x 14
VFD-10D-A 36X18	36 x 18
VFD-10D-A 36X20	36 x 20
VFD-10D-A 36X36	36 x 36

All dimensions are in inches



VFD-10D-C

Vertical or Horizontal, Curtain Style Fire Damper with 2" Deep Round Transition

- For Use In Static or Dynamic HVAC Systems
- U.L. 555 Fire Resistance Rating: 1 ½ Hour
- 165°F UL Listed Fusible Link
- Qualified to 2,000 ft/min and 4 in. wg.

Item Number	Size
VFD-10D-C 6	6" Dia
VFD-10D-C 8	8" Dia
VFD-10D-C 10	10" Dia
VFD-10D-C 12	12" Dia
VFD-10D-C 14	14" Dia

FUSIBLE LINK

- Elsie C Fusible Link 165° (For Use with VFD-10D)
- Elsie C Fusible Link 212° (For Use with Type A & C Dynamic Fire Dampers)
- Elsie E Fusible 165° (For Use with Multi Blade Fire Dampers)
- Elsie B Fusible Link- No Hooks, 165° (For Use with Cfd's)



Item Number	Size
FUSIBLE LINK - ELSIE C	165°
FUSIBLE LINK - ELSIE C - 212	212°
FUSIBLE LINK - ELSIE E	165°
FUSIBLE LINK - ELSIE B	165°





EFD-245

Aluminum, 2" Deep, 45° Drainable Blade, Extruded Louver

- Mill Finish
- 1 ½ flange

Item Number	Size
EFJ-245 8X6	8 x 6
EFJ-245 8X8	8 x 8
EFJ-245 16X8	16 x 8

All dimensions are in inches



EFD-437

Aluminum, 37.5° Drainable Blade, Extruded Louver

- Certified for Air Performance and Water Penetration
- Mill Finish
- 1 ½ flange

Item Number	Size
EFD-437 12X12	12 x 12
EFD-437 18X12	18 x 12
EFD-437 18X18	18 x 18
EFD-437 24X12	24 x 12
EFD-437 24X18	24 x 18
EFD-437 24X24	24 x 24
EFD-437 36X24	36 x 24
EFD-437 36X36	36 x 36

All dimensions are in inches



DMR

Round Duct Access Doors (Sandwich Type)

- 22 ga. Galvanized Steel Construction
- Max System Pressure: +20" wg., -10" wg

Item Number	Size	Pipe Diameter
DMR 8X4-6	8 x 4	6
DMR 8X4-8		8
DMR 12X8-10	12 x 8	10
DMR 12X8-12		12
DMR 12X8-14		14
DMR 16X12-16	16 x 12	16
DMR 16X12-18		18
DMR 16X12-20		20
DMR 16X12-22		22
DMR 16X12-24		24

All dimensions are in inches



HAD

Hinged Access Doors

- 1 1/2" Fiberglass Insulation
- Galvanized Construction

Item Number	Size
HAD-66	6 x 6
HAD-88	8 x 8
HAD-1010	10 x 10
HAD-1212	12 x 12
HAD-1414	14 x 14
HAD-1616	16 x 16
HAD-1818	18 x 18
HAD-2020	20 x 20
HAD-2424	24 x 24

All dimensions are in inches

Quietflex Flex Duct



60 Series



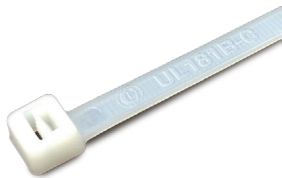
80 Series



06 Series

Model	Description	R Value	Diameter									
			4	5	6	8	10	12	14	16	18	20
60	Insulated w/ Black Jacket, 25' Bag	6.0	460C QF	560C QF	660C QF	860C QF	1060 QF	1260 QF	1460 QF	1660 QF	1860 QF	2060 QF
80	Insulated w/ Silver Jacket, 25' Bag	6.0	480C	580C	680C	880C	1080	1280	1480	1680	1880	2080
06	Uninsulated, 25' Bag	--	406 QF	506 QF	606 QF	806 QF	1006 QF	1206 QF	1406 QF	1606 QF	1806 QF	2006 QF

Cambridge Duct Bands



Nylon Duct Bands

Size	Item Number
36"	CT36-175K9
48"	CT48-175K9

Provided in packs of 50.



Quick Release S/S Band

Size	Item Number
4", 5", 6"	QR-104PB
7", 8"	QR-128PB
9", 10", 12"	QR-188PB
14", 16"	QR-258PB
18", 20"	QR-312PB

FlexRight



Flexible Duct Elbow Support

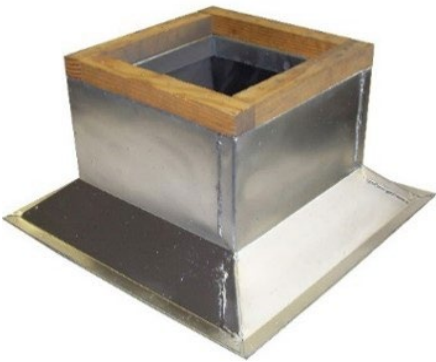
Size	Item Number
4" - 16"	FLEXRIGHT



Hranec Equipment Rails

- 18 ga. Galv Steel
- Welded Seams
- Built-In Cant
- 2" Wood Nailer
- 2" Flange Out
- Galv. Top Cap

Item Number	Description	H
ER2412-2X6	24" 2x6 Equipment Rail	12"
ER3612-2X6	36" 2x6 Equipment Rail	12"
ER7212-2X6	72" 2x6 Equipment Rail	12"



Hranec Roof Curbs

- 18 ga. Galv Steel
- Welded Seams
- Built-In Cant
- 2" Wood Nailer
- 2" Flange Out

Size	H	Item Number	Description
14x14	12"	RCC1414-12	Canted
17x17	12"	RCC1717-12	Canted
17x17	18"	RCC1717-18	Canted
19x19	12"	RCC1919-12	Canted
19x19	18"	RCC1919-18	Canted
23x23	12"	RCC2323-12	Canted
27x27	12"	RCC2727-12	Canted
27x27	18"	RCC2727-18	Canted
32x32	12"	RCC3232-18	Canted
32x32	18"	RCC3232-18	Canted



Roof Pipe Portals

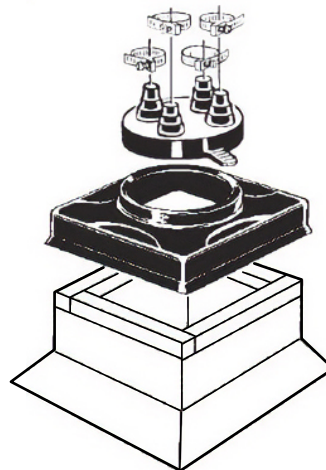
- RP-481 Cap: For Four 3/8" thru 1" Pipe
- RP-412 Cap: For Four 1" thru 2" Pipe
- RP-212 Cap: For Two 3/8" thru 1" and Two 1" thru 2" Pipe
- RP-126 Cap: For One 2" thru 6" Pipe
- N-5 Portal Cap (5 boots and s/s clamps are included)
Five 1/2" thru 2-1/2" Pipe
- Double Portal Requires Two ABS Covers & Two Caps

20

Item Number	Description
RP-481	Four 3/8" thru 1" Pipe
RP-412	Four 1" thru 2" Pipe
RP-212	Two 3/8" thru 1" and Two 1" thru 2" Pipe
RP-126	One 2" thru 6" Pipe
N-5	N-5 Portal Cap (5 boots and s/s clamps are included) Five 1/2" thru 2-1/2" Pipe

Stainless Steel Clamp	
Size	Item Number
1"	SSC1
2"	SSC2
6"	SSC6

ABS Plastic Cover	
Item Number	Description
ABSPC1	Single
ABSPC-2	N-5 ABS Cover



Roof Curb			
Size	H	Item Number	Description
12x12	8"	RCC12128	Canted
27.5x12	8"	RCC275128	Canted
15x15	12"	RCC1515-12	Canted



SnapLock Pipe

- 26 Gauge
- 5' Length



SnapLock Pipe

- 30 Gauge
- 5' Length



Adjustable Ells

- 26 Gauge



Adjustable Ells

- 24 Gauge



Adjustable Ells

- 30 Gauge

Diameter	Snaplock Pipe	Snaplock Pipe	Adjustable Ells	Adjustable Ells	Adjustable Ells
4"	SMP4-5	RP050430060	SME4-90	--	RX530430
5"	SMP5-5	RP050530060	SME5-90	--	RX530530
6"	SMP6-5	RP050630060	SME6-90	--	RX530630
7"	SMP7-5	--	SME7-90	--	--
8"	SMP8-5	RP050830060	SME8-90	--	RX530830
10"	SMP10-5	--	SME10-90	--	--
12"	SMP12-5	--	SME12-90	--	--
14"	SMP14-5	--	--	SME14-90	--
16"	SMP16-5	--	--	SME16-90	--
18"	SMP18-5	--	--	SME18-90	--



AT Airtite

- no Damper
- 24 Gauge



ATD Airtite

- with Damper
- 24 Gauge



Tee Cap

- 26 Gauge



Tee

- 90 Degree
- 26 Gauge

Diameter	AT	ATD	Tee Cap	Tee
4"	SF0005 - 4"	SF0010 - 4"	RX2104	RX7504
5"	SF0015 - 5"	SF0020 - 5"	RX2105	RX7505
6"	SF0025 - 6"	SF0030 - 6"	RX2106	RX7506
8"	SF0045 - 8"	SF0050 - 8"	RX2108	RX7508
10"	SF0065 - 10"	SF0070 - 10"	RX2110	RX7510
12"	SF0075 - 12"	SF0080 - 12"	RX2112	RX7512
14"	SF0085 - 14"	SF0090 - 14"	--	--
16"	SF0095 - 16"	SF0100 - 16"	--	--
18"	--	SF0110 - 18"	--	--



Single Wall Tall Cone Flashing

- 26 Gauge



Storm Collar

- 26 Gauge



Model DV Dryer Vent w/ Air Flap

- 26 Gauge



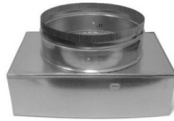
Galvanized Rain Cap

- 26 Gauge

Size	SW Tall Cone Flashing	Storm Collar	Dryer Vent	Galvanized Rain Cap
4"	TCFEX200426TC	SCRX0904	EX7404	RCRX2804
5"	--	--	--	--
6"	TCFEX200626TC	SCRX0906	EX7406	RCRX2806
8"	TCFEX200826TC	SCRX0908	EX7408	RCRX2808
10"	TCFEX201026TC	SCRX0910	--	RCRX2810
12"	TCFEX201226TC	SCRX0912	--	RCRX2812
14"	--	--	--	RCRX2814
16"	--	--	--	RCRX2816

TR Square to Round Transition with Collar

Size	Item Number
6 x 6 / 6" Dia	CA60060606A
8 x 8 / 6" Dia	CA60080806A
8 x 8 / 8" Dia	CA60080808A
9 x 9 / 6" Dia	CA60090906A
9 x 9 / 8" Dia	CA60090908A
10 x 10 / 8" Dia	CA60101008A
10 x 10 / 10" Dia	CA60101010A
12 x 12 / 8" Dia	CA60121208A
12 x 12 / 10" Dia	CA60121210A
12 x 12 / 12" Dia	CA60121212A
14 x 14 / 10" Dia	CA60141410A
14 x 14 / 12" Dia	CA60141412A
15 x 15 / 12" Dia	CA60151512A
15 x 15 / 14" Dia	CA60151514A
18 x 18 / 16" Dia	CA60181816A
18 x 18 / 18" Dia	CA60181818A



Tapered Reducer

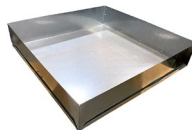
- No Crimp

Size	Item Number
4 to 3	RX410403
5 to 4	RX410504
6 to 4	RX410604
6 to 5	RX410605
8 to 4	RX410804
8 to 6	RX410806
10 to 6	RX411006
10 to 8	RX411008
12 to 8	RX411208
12 to 10	RX411210
14 to 10	RX411410
14 to 12	RX411412



BP Add a Tap Back Pan

Size	Item Number
20 x 20	CA592020A
22 x 22	CA592222A



Oval Starter Collars

- 26 Gauge w/ Dovetail
- No Damper

Size	Item Number
6"	OSCOX6406
8"	OSCOX6408
10"	OSCOX6410
12"	OSCOX6412



SB & 90B Register Boot

Size	SB Straight	90B 90 Degree
	Item Number	Item Number
10 x 4 x 6	RB204106	RB304106
8 x 6 x 10	RB2060810	--
8 x 6 x 8	RB206088	--



High Efficiency Takeoff With Damper

- 26 Gauge

Size	Item Number
8"x 14"- 10"	TA57D10
10"x 16"- 12"	TA57D12
6"x 10"- 6"	TA57D6
6"x 12"- 8"	TA57D8



Cable Operated Radial Damper

• 2ft Cable



Size	Item Number
6" Dia.	RT-150-06
8" Dia.	RT-150-08
10" Dia.	RT-150-10
12" Dia.	RT-150-12

Loose and Bulk Cable

Size	Item Number
2'	MAT-A2
3'	A3 - 3FT
5'	MAT-A05
6'	AD6 - 6FT
10'	MAT-A010
50'	MAT-CBL-BULK50
100'	MAT-CBL-BULK100



Bracket Kits



2' Kit	5' Kit	Bottom Mount 5' Kit
MAT-1056-CCM KIT-2	MAT-1056-CCM KIT	MAT-1058-CCM-MB
Bracket, 2' of cable, 1012 modified coupling and cap set (1 long, 1 short)	Bracket, 5' of cable and Cap Set (1 Long, 1 Short)	Bottom Mount Bracket, 5' of Cable and Cap Set, (1 Long, 1 Short)

Worm Gear



RT-WGA-1048	RT-WGA.25-6	RT-WGA.25-10	RT-WGA.25-L
Worm Gear with field cut cable end installed	Worm Gear with 6' of cable, wall bracket, mini ceiling cap and 4 set screws for 1/4" hardware	Worm Gear with 10' of cable, wall bracket, mini ceiling cap and 4 set screws for 1/4" hardware	Loose Worm Gear with 4 Set Screws - No Cable

Worm Gears fit 1/4", 3/8" hardware and 1/2" round hardware.

Accessories



Modified Coupling	Cable Coupling Assembly	Field Cut Cable	Replacement Cap Set	Nut Driver
MAT-1012	MAT-1027	MAT-1048	MAT-1055	MAT-1014A
Square to round opening for factory cable to field cut cable	Cable Coupling Assembly	Field Cut Cable End Coupling Assembly	Replacement Cap Set (1 Long, 1 Short)	Nut Driver

Delta Breez

Signature and Smart Series Ventilation Fans



Signature Series

Standard Construction

SIG80-110 Signature Series



SIG80-110

- Energy Star qualified with brushless DC motor technology
- Full speed adjustable, 80 or 110 CFM
- Energy efficient
- Green LED power indicator indicates power on
- Built in backdraft damper
- Quiet operation - < .3 sones @.1 static pressure

Smart Series

Standard Construction

SMT150D Smart Series

SMT150-200 Smart Series

- Energy Star qualified with brushless DC motor technology
- Dual speed
- User adjustable delay timer options
- Energy efficient
- Green and amber LED indicator lights to show continuous low speed and full speed modes
- Built in backdraft damper
- Quiet operation - < .3 sones @.1 static pressure



**SMT150D
SMT150-200**

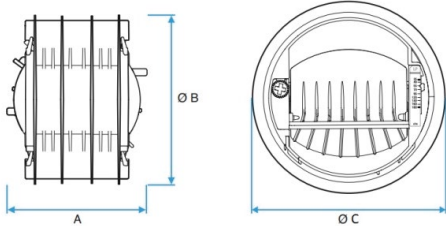
Delta Breez Exhaust Fan			
Item Number	CFM	W	ENERGY STAR®
SIG80-110	80/110	8.2W*	★
SMT150D	0-110/150	16.9W*	★
SMT150-200	150/200	24.0W*	★

At full speed and 0.1 Static Pressure.

CAR3 | Constant Airflow Regulator

The Aldes CAR3 Constant Airflow Regulator provides a low-cost solution to maintaining the correct airflow balance of ventilation systems, improving system performance and indoor air quality, which can provide significant savings on annual operating costs.

- Dual-side airflow adjustment dial and CFM indicator
- Modulating rotary damper
- Resin enhanced with antimicrobial, anti-static, and flame retardant additives



Duct Size	A	Ø B	Ø C*	Low-Pressure 0.12-1.2 in. w.g (30-300 Pa)	
				Airflow	P/N
4" (100 mm)	3" (78 mm)	3.8" (97 mm)	4.1" (104 mm)	15-85 CFM	CAR3L4R4
5" (125 mm)	3.8" (97 mm)	4.8" (121 mm)	5.2" (132 mm)	35-180 CFM	CAR3L5R5
6" (150 mm)	4.6" (118 mm)	5.8" (148 mm)	6.1" (155 mm)	45-260 CFM	CAR3L6R6
8" (200 mm)	6.7" (170 mm)	7.7" (196 mm)	8.2" (208 mm)	70-385 CFM	CAR3L8R8

*ØC dimensions includes gasket

CAR3 Constant Airflow Regulators		
Item Number	Description	CAR3
CAR3-L4-R4	4 Inch Constant Airflow Regulator Low-Pressure 15-85 CFM	●
CAR3-L5-R5	5 Inch Constant Airflow Regulator Low-Pressure 35-180 CFM	●
CAR3-L6-R6	6 Inch Constant Airflow Regulator Low-Pressure 45-260 CFM	●
CAR3-L8-R8	8 Inch Constant Airflow Regulator Low-Pressure 70-385 CFM	●

● In Stock

HAVTECH SUPPLY, LLC TERMS AND CONDITIONS OF SALE HEATING AND AIR CONDITIONING PARTS AND EQUIPMENT

COMPANY: The "Company" as used herein shall mean Havtech Supply, LLC

QUOTED ITEMS: The above quote does NOT include items that are not specifically quoted. It is the responsibility of the Purchaser to verify accuracy of products listed, counts or quantities listed, accessories needed, and specifications of product including voltages.

TERMS OF PAYMENT: Terms of payment are subject at all times to prior approval by the Company's credit department. Unless otherwise required by the Company's credit department, payment is due upon tender of delivery. If at any time the financial condition of the Purchaser or other circumstances affecting the credit decision, in the Company's opinion, does not justify continuance of production of products or shipment of products on the terms of payment specified, the Company may require full or partial payment in advance, or may at its sole discretion stop or delay production or shipment of products. In the event of default in payment, Purchaser agrees to pay all costs of collection incurred by Company including but not limited to collection agency fees, attorney fees and court costs. Past due amounts shall bear interest at the highest rate allowed by law. Invoices for \$3,000 or more paid with a credit card are subject to a 3% surcharge.

PRICE POLICY: Prices of the goods may be increased depending on the date of release and/or shipment of the order, announced increases in the Company's list prices or increases in labor and material cost.

SHIPPING TERMS: All shipments are F.O.B. factory or F.O.B. Company. Title and risk of loss or damage to Goods will pass to Purchaser upon tender of delivery of the Goods to the carrier at the manufacturer's factory or Company's stock or warehouse. Freight charges are included if so quoted. Shipments will be made via a low cost common carrier; charges for special carrier services requested by the Purchaser shall be paid by the Purchaser. The Company may ship the Goods in one or more lots.

CLAIMS: The responsibility of the Company for all shipments ceases upon delivery of goods in good order to the carrier. Since all goods are shipped at Purchasers risk, any claims for damage or shortage, in transit must, be filed by Purchaser against carrier. Claims for factory shortages will not be considered unless made in writing to the Company within ten (10) days after receipt of the goods and accompanied by Company's bill of lading and factory order numbers.

TAXES: The amount of any present or future taxes applicable to the product shall be added to the price contained herein and paid by the Purchaser in the same manner and with the same effects as if originally added thereto.

CANCELLATIONS: Orders that are being filled out of Company inventory may be cancelled without charge, provided Company receives written notice of cancellation prior to tender of delivery. After tender of delivery, requests for cancellation shall be subject to the "Returned Goods" clause below. Orders that are being filled by specific Company purchase may be cancelled only if, as and when allowed by the seller.

SHIPMENT & DELIVERY DATES: Any stated shipment and/or delivery dates are estimates only and not guaranteed. In no event will Company be liable for any damages or expenses caused by delays in shipment and/or delivery.

SPECIAL ORDERS: Special orders and/or configured orders are non-cancellable and non-returnable.

PRODUCT CHANGES: In the interest of continuous product improvements, the Company reserves the right to change specification and/or design without incurring obligation.

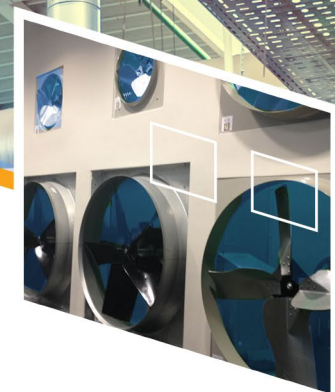
RETURNED GOODS: Goods normally carried in stock may be returned provided they are in new condition and in the original packaging. Goods that have been installed or are not in the original packaging are not returnable. Special order parts not returnable to the manufacturer may not be returned. All returns are subject to a 20% restocking and handling fee.

SUPPORTING DOCUMENTS: Submittals and O&M manuals shall be submitted in electronic format upon request; no hard copies will be submitted.

DISCLAIMER OF WARRANTY: It is understood and agreed that: (a) Company is an independent distributor and not the manufacturer of the Goods it sells; (b) the only warranties for the Goods are those of the manufacturers of the Goods, which Company agrees to assign to Purchaser; and (c) Company has no independent obligation or liability arising from the manufacturers' warranties. **COMPANY HAS NOT MADE AND HEREBY DISCLAIMS ANY REPRESENTATIONS OR WARRANTIES, DIRECT OR INDIRECT, EXPRESS OR IMPLIED, INCLUDING WITHOUT LIMITATION, ANY AND ALL WARRANTIES CONCERNING OR RELATED TO THE DESIGN OR CONDITION OF ANY GOODS, THEIR MERCHANTABILITY, AND/OR FITNESS FOR ANY PARTICULAR PURPOSE.** Purchaser is responsible for fulfilling all manufacturer requirements regarding warranty claims, including but not limited to returning the allegedly defective part, advance payment for replacement parts pending evaluation of warranty liability, and payment of shipping costs.

LIMITATION OF LIABILITY: COMPANY'S LIABILITY TO PURCHASER FOR ANY MATTER ARISING OUT OF OR RELATING TO THIS AGREEMENT AND/OR ANY GOODS FURNISHED, WHETHER IN CONTRACT, TORT, WARRANTY OR OTHERWISE, SHALL NOT EXCEED THE PRICE OF THE GOODS.

TERMS OF SALE: Sale of goods covered hereby to Purchaser is made solely on the terms and conditions set forth herein, notwithstanding any additional or conflicting terms and conditions that may be contained in any purchase order or other form of purchase; all such additional or conflicting terms and conditions are hereby rejected by the Company. No waiver alteration or modification of the foregoing terms and conditions shall be valid unless made in writing and signed by a corporate officer of the Company. In particular and without limiting the foregoing, notwithstanding anything to the contrary in purchase order or any other documents, the Company does not accept any order subject to project design and specifications. Purchaser to accept full and sole responsibility to determine whether the product ordered by Purchaser meets the design and specification requirements of any project.



**Columbia
Havtech Supply**
9505 Berger Road
Columbia, MD 21046
240.568.0960
Parts@Havtech.com

**Capitol Heights
Havtech Supply**
1101 Hampton Park Blvd, Suite 400
Capitol Heights, MD 20743
240.547.0287
Parts@Havtech.com